

DELINEATOR GUBELA



◀◀ Trapezoidal reflector, installed in the trough of A-profile barriers, to improve night-time visibility and help guide motorists at night. ▶▶

ADVANTAGES

► USE

- Available in **single-sided and double-sided** versions
- **Durability**: the reflector is completely protected by the trough of the barrier
- Resistance to weathering and corrosion

► INSTALLATION / USE

- **Easy installation**: for mounts on the support bolt in the trough of A-profile barriers



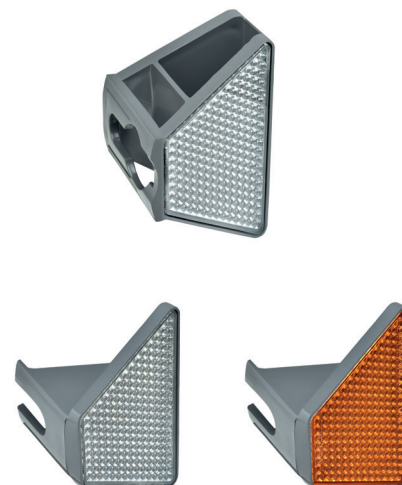
SOCIAL AND ENVIRONMENTAL BENEFIT

- **MADE IN EUROPE**
Made in Italy



TECHNICAL CHARACTERISTICS

	Gubela reflector
Form	Trapezoidal polyethylene reflector
Bracket	Rigid
Reflector dimensions	120 x 45 x 70mm
Colours of single-sided reflectors	White Orange
Colours of double-sided reflectors	White/white Orange/orange
Retroreflection	White: class 2 R2
Fastening	Fastened to the support bolt of the spacer on A-profile barriers
Installation	Loosen or unscrew the bolt



INSTALLATION CONDITIONS

- Fastening to the support bolt of the spacer on A-profile barriers:
 - For standard single-sided reflectors: simply loosen the bolt
 - For standard double-sided reflectors: unscrew the bolt completely, insert the reflector and tighten