



Guide



Safeguard



Motorway & dual carriageway



Roads



Suburban



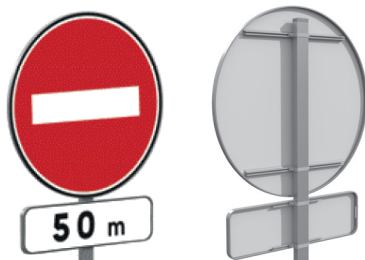
Urban

VERTICAL SIGNAGE ► POLICE SIGNS

POLICE ADVANTAGE



◀ A range of sleek police signs with open backs and 2 versions to suit all environments. ▶



ADVANTAGES

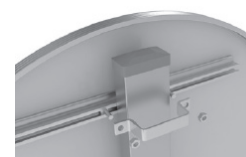
► USAGE

- Impact-resistant panels for optimum user safety: crimped face and lateral band ensuring panel durability
- Easy, safe installation and handling: rounded lines for a safe grip
- Easy to install: horizontal and vertical adjustment of the panel on the mount using the attachment rails on the back of the panel
- Adaptability of the panel to its environment: back-to-back and offset mounting possible
- Can be adapted to urban design: ability to customise the colour of the back and/or lateral band
- Environmentally-friendly products thanks to highly recyclable materials

► MOUNTS

Several installation mount options:

- TR/TC type mount
- Fluted pole mount
- Specific mount



TR80x40 Disc Mount

SOCIAL AND ENVIRONMENTAL BENEFIT

- SOCIAL PARTNERSHIP
Components made by disabled adult workers in an ESAT disability integration workshop
- SAVED RESOURCES
Maximum reduction in residual waste
- ENERGY SOBRIETY
Laser cutting line running on compressed air without filler gas, LED wallpaper printer reducing energy consumption by 75%
- MADE IN FRANCE
Produced in the Centre-Val de Loire region



MADE IN FRANCE








POLICE ADVANTAGE



TECHNICAL FEATURES

> RANGE / DIMENSIONS IN MM (NUMBER OF ATTACHMENTS)

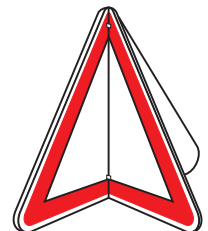
PANELS	MINIATURE	SMALL	NORMAL	LARGE	VERY LARGE	OVERSIZED	GIANT
Location	In town where problems using the Petite range	Narrow streets	In town	On dual carriageways	On the motorway		
Type A & AB 	500 (2)	700 (2)	1000 (2)	1250 (2)	1500 (3)	-	-
Type AB4 	400 (2)	600 (2)	800 (2)	1000 (2)	-	-	-
Type AB6 & AB7 	350 (2)	500 (2)	700 (2)	900 (2)	1050* (3)	-	-
Type B 	450 (2)	650 (2)	850 (2)	1050 (2)	1250 (3)	-	-
Type C & CE 	350 (2)	500 (2)	700 (2)	900 (3)	1050* (3)	1200 (3)	1500 (4**)

- Number of fasteners: 2 for each pane
- Retroreflective film Class 1**, Class 2 or Class 3

* Out of reinforced range / ** Take M10 directional fixing
 ***Only available on miniature, small and normal ranges

> SIGN DIMENSIONS

Signs 50 m	350 x 150	500 x 150	500 x 200	700 x 200	350 x 250	900 x 250	500 x 300
	1000 x 300	350 x 350	500 x 350	700 x 350	1200 x 400	500 x 500	1500 x 500
	900 x 500	1000 x 600	1200 x 600	700 x 700	900 x 900		



Type A shutter panels

> COMBINATION OF TYPE A, B AND C SHUTTER PANELS AND SHUTTER SIGNS

TYPE OF PANEL	PANEL RANGES (mm)		SIZE OF ADVANTAGE RANGE SIGNS						
Type A	Regular	1000	500	700	900	900	1000	1000	
	Large	1250	x 150	x 200	x 250	x 500	x 300	x 600	
	Small	650							
Type B	Regular	850	500 x	700 x	900 x	900 x	1000 x		
	Large	1050	150	200	250	500	300		
	Very large	1250							
Type C	Small	500							
	Regular	700	500	500	700	700	900	900	
	Large	900	x 150	x 300	x 200	x 350	x 250	x 500	1000 x 300

