



**TECHNOLOGIES
NOUVELLES**

Airports & aerodromes



Control & detect



Data collect & process



Preserve



Optimize budget



DIAGNOSTIC STUDY OF AIRFIELD PAVEMENTS

**DIAGNOSE AND MEASURE CHANGES
IN RUNWAY CONDITION**

**ASSESSING, ANALYSING
AND MEASURING THE CHANGES
IN THE STRUCTURE OF YOUR
RUNWAYS OVER TIME TO HELP
PREVENT DAMAGE AN ENHANCE
MAINTENANCE ACTIVITIES.**



**OPTIMIZE
YOUR BUDGET
AND VALUE
YOUR PAVEMENT
ASSETS**

**High performance of airfield
runway condition surveying and
rapidity of data acquisition**

**Automated detection of damage and
measurement of deformations**

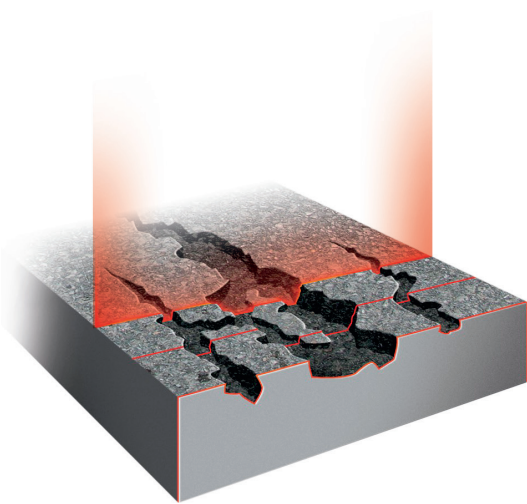
**Objective, reliable and comprehensive
measures**

**Accurate diagnostic analysis for
scheduling preventive and remedial
maintenance**

**Flexible daytime and night-time servicing
that does not interfere with operations**

**Consulting, pavement engineering and
decision-making support**

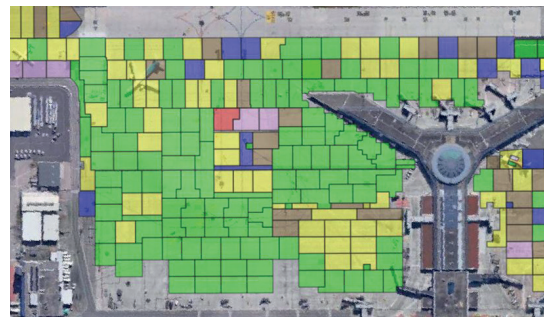
DIAGNOSTIC AND MEASURE CHANGES IN RUNWAY CONDITIONS



Our teams deliver solutions tailored to your needs:

- Setting up a prevention data collection plan for the surveyed areas
- Implementation of high-performance measurement systems: 7 types of measurements performed simultaneously
- Runway assessment using an automatic guiding system in real time

- Acquisition of 3D images of the runway to detect damage and measure deformations (acquisition process achieved in few hours)
- Recording the trajectory tracking, XYZ position and degradation position (Real Time Kinematic GPS system with an accuracy < 10 cm)
- Data post-processing, control and verification
- Calculation of the pavement condition indicators to determine the Pavement condition index



- Determination of longitudinal evenness according to waveband grade and IRI (International Roughness Index) indicators
- Provision of data that can be integrated into any Geographic Information System
- Option to perform a supplementary structural diagnostic allowing to assess the bearing capacity of runways based on measures and studies such as :
 - Deflexion with SHWD (Super Heavy Weight Deflectometer)
 - Pavement radar (continuously determining homogenous areas and thicknesses of materials)
 - Cores and surveys
 - Laboratory tests (CBR Californian Bearing Ratio and others)
 - PCN calculations (Pavement Classification Number)

OUR KNOW-HOW

As experts in road and traffic engineering, we can be your expert advisers, assisting you in all your asset management or traffic analysis, and management projects of all types, road, railway or airport infrastructures, whether in an urban, peri-urban or road environment.

OUR COMMITMENTS

COLLECTION OF DATA

Performance of comprehensive documentary studies, asset mapping, pavement assessment, and mobility measurements.

ANALYSIS

Performance of functional and regulatory analysis and assessments of the condition of your infrastructures.

RECOMMENDATION

Proposal of solutions in support of decision-making, thereby improving your infrastructures and increasing their longevity.

ADVISE & SUPPORT

Ongoing support through all the phases of your project, while meeting your expectations in terms of performance and cost management.



**TECHNOLOGIES
NOUVELLES**

Technologies Nouvelles

162 avenue des Hauts-Grigneux - 76420 Bihorel

Tél. : +33(0)2 35 12 30 48

contact@technologiesnouvelles.fr

www.technologiesnouvelles.fr